



STATISTICAL RELEASE

FEBRUARY - 2016

P.O. Box 2321, Zanzibar
Telephone +255 24 223 1869
Fax: +255 24 223 174 2

Email: zanstat@ocgs.go.tz

Website: <http://www.ocgs.go.tz>

29TH FEBRUARY, 2016

ZANZIBAR CONSUMER PRICE INDEX (CPI) FOR FEBRUARY, 2016

ANNUAL HEADLINE INFLATION RATE INCREASED TO 10.9 PERCENT

Zanzibar Annual Headline Inflation rate for the year ended February, 2016 increased to 10.9 percent compared to 9.7 percent recorded in January, 2016. Food and Non-Alcoholic Beverages inflation rate increased to 14.5 percent in February 2016 from 11.8 percent recorded in January 2016. The overall Index increased to 120.6 in February, 2016 compared to 108.7 recorded in February, 2015 (**Table 1 and chart 2**).

TABLE 1: CHANGES IN CONSUMER PRICE INDICES FOR FEBRUARY, 2016

(BASE AUG. 2012 = 100)

Description	Weights	INDICES			Jan 2016 to Feb 2016 % Change	Feb 2015 to Feb 2016 % Change
		Feb-15	Jan-16	Feb-16		
Food and Non-Alcoholic Beverages	49.5	102.7	118.5	117.7	-0.7	14.5
Alcohol Beverages, Tobacco and Narcotics	0.3	112.7	115.4	115.4	0.0	2.4
Clothing and Footwear	9.3	117.2	130.4	130.2	-0.2	11.1
Housing, Water, Electricity, Gas, and Other Fuels	17.1	112.0	119.0	118.1	-0.7	5.4
Furnishing, Household Equipment and Routine Household Maintenance	4.6	110.0	116.8	116.8	0.0	6.2
Health	2.8	105.8	118.1	117.9	-0.2	11.4
Transport	6.3	102.0	102.4	101.5	-0.9	-0.5
Communication	2.6	184.1	199.9	199.4	-0.2	8.3
Recreation and Culture	0.8	125.2	130.3	130.3	0.0	4.1
Education	1.3	138.1	150.6	150.6	0.0	9.1
Restaurants and Hotels	2.1	102.1	134.5	134.7	0.2	31.9
Miscellaneous Goods and Services	3.2	122.3	131.8	131.8	0.0	7.8
All Items	100.0	108.7	121.3	120.6	-0.6	10.9

Source: Office of Chief Government Statistician, Zanzibar

Annual Food and Non-Alcoholic Beverages group increased to 14.5 percent driven by Thailand Rice (11.9%), Mbeya Rice (21.8%), Jasmin Rice (9.9%), Flatbread (2.3%), Maize Flour (29.5%), Wheat Flour (16.4%), Beef with Bones (9.0%), Beef without Bones (14.3%), Fish (1.9%), Sugar (14.1%).

Annual Housing, Water, Electricity, Gas, and Other Fuels group decreased to 5.4 percent driven by Town Gas (-1.2%) and Kerosene (-17.7%).

Annual Transport group decreased to -0.5% driven by Diesel (-7.7%) and Petrol (-4.7%).

ANNUAL INFLATION RATE FOR OTHER DERIVED STATISTICS

Annual Inflation Rate for all items exclude food consumed at home and at restaurants (S1) decreased to 6.5 percent in February 2016 compared to 6.8 percent recorded in January 2016. Annual inflation rate for food consumed at home and at restaurants (S2) increased to 15.2 percent in February, 2016 from 12.5 percent recorded in January 2016. Annual inflation rate for Energy and Fuels (S3) (Petrol, Diesel, Kerosene, Charcoal, Electricity, Gas and Firewood) is -4.3 percent in February 2016 compared to -3.3 recorded in January 2016. Annual Core inflation rate (S4) (Exclude Rice, Wheat Flour, Sugar, Petrol, Diesel, kerosene, and Charcoal) increased to 12.0 percent in February, 2016 from 10.3 percent in January, 2016. Annual inflation rate for Fish (S5) increased to 9.8 percent in February, 2016 compared to -14.9 percent in January, 2016. Annual Inflation rate for Rice, Wheat Flour, and Sugar (S6) remain to 13.8 percent in February, 2016 as recorded in January, 2016 (**Table 2**)

TABLE 2: OTHER DERIVED STATISTICS

Description	Weights	INDICES			Jan 2016 to Feb 2016 % Change	Feb 2015 to Feb 2016 % Change
		Feb-15	Jan-16	Feb-16		
All Item Exclude Food (S1)	48.4	115.6	123.6	123.0	-0.4	6.5
Food (S2)	51.6	102.7	119.1	118.3	-0.7	15.2
Energy and Fuels (S3)	10.6	104.7	102.0	100.2	-1.7	-4.3
Core Exclude Food and Energy (S4)	78.7	112.3	126.0	125.7	-0.2	12.0
Fish Index (S5)	6.5	98.8	105.8	108.5	2.6	9.8
Rice, Wheat Flour and Sugar Index (S6)	14.6	96.5	111.6	109.9	-1.5	13.8

Source: Office of Chief Government Statistician, Zanzibar

MONTHLY INFLATION RATE DECREASED TO NEGATIVE 0.6 PERCENT IN FEBRUARY, 2016

During February, 2016 the Monthly Inflation rate decreased to -0.6 percent compared to 0.1 percent recorded in January, 2016. The monthly Food and Non-Alcoholic Beverages inflation rate in February, 2016 was -0.7 percent compared to -0.5 percent in January, 2016 (**Table 1**)

Monthly Inflation Rate for all items exclude food consumed at home and at restaurants (S1) decreased to -0.4 percent in February 2016 compared to 0.8 percent registered in January, 2016. Monthly inflation rate for food consumed at home and at restaurants (S2) is -0.7 percent in February, 2016 compared to -0.5 percent in January, 2016. Monthly inflation rate for energy and fuels (S3) (Petrol, Diesel, kerosene, electricity, gas, Charcoal and Firewood) decreased to -1.7 percent in February 2016 compared to 1.2 registered in January, 2016. Monthly Core inflation rate (S4) (Exclude Rice, Wheat Flour, Sugar, Petrol, Diesel, kerosene, and Charcoal) is -0.2 percent in February, 2016 as registered in January 2016. Monthly inflation rate for fish (S5) increased to 2.6 percent in February, 2016 compared to -1.2 percent registered in January, 2016. Monthly Inflation rate for Rice, Wheat Flour and Sugar (S6) decreased to -1.5 percent in February, 2016 compared to 1.3 percent in January, 2016. (**Table 2**)

MOVEMENT OF AVERAGE PRICES FOR SELECTED ITEMS

The decreasing of Monthly inflation rate to -0.6 percent for the month of February, 2016 was contributed by decreasing prices of items such as Thailand Rice (-2.4), Mbeya Rice (-0.7%), Flatbread (-1.8%) Maize Flour (-1.3%), Fish (-1.8%), Yellow Cooking Banana (-4.5%), Octopus

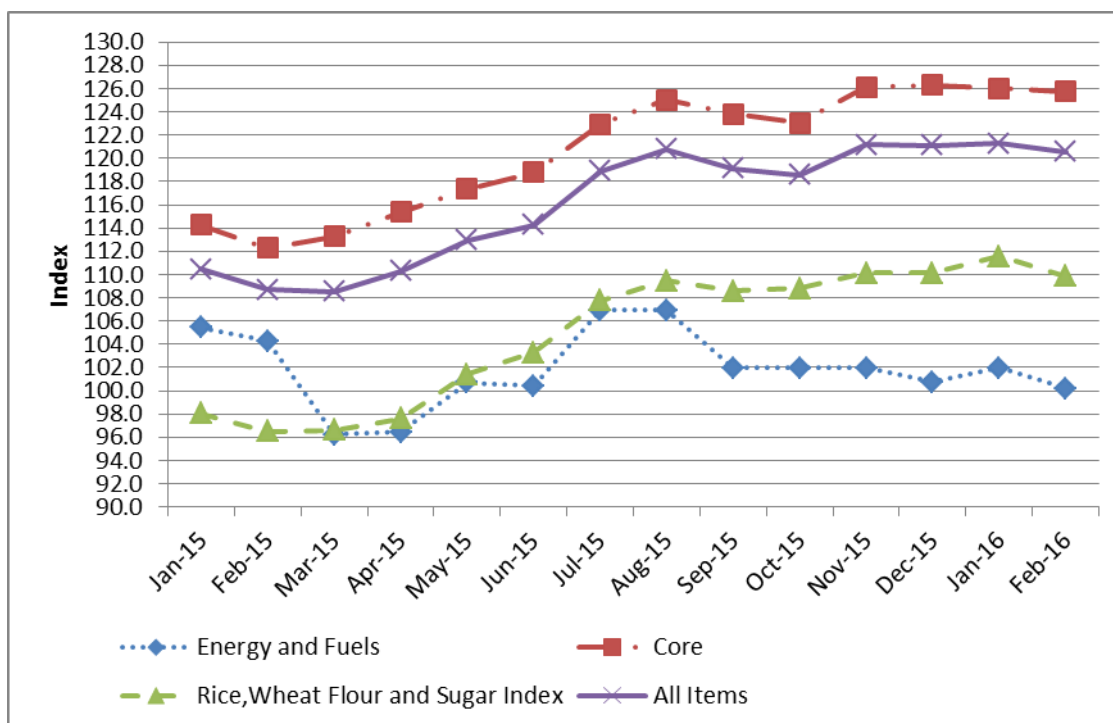
(-2.0%), Squids (-4.2), Eggs (-3.3%), Potatoes (-8.2%), Cassava (-9.0%), Kerosene (-5.7), Diesel (-4.2%) and Petrol (-1.1%). (Table 3)

Table 3: Monthly Average Prices for Selected Items 2015 - 2016

Items	Unit	Feb-15	Jan-16	Feb-16	% Monthly	% Annually
Thailand rice (Mapembe)	1 kg	1,131	1,297	1,266	-2.4	11.9
Mbeya	1 kg	1,915	2,349	2,331	-0.7	21.8
Jasmi	1 kg	1,697	1,864	1,864	0.0	9.9
Basmat	1 kg	3,143	3,143	3,143	0.0	0.0
Flatbread (Boflo)	0.5kg	917	956	938	-1.8	2.3
Maize Flour	1kg	963	1,265	1,248	-1.3	29.5
Wheat Flour	1kg	1,129	1,315	1,315	0.0	16.4
Fish	1kg	7,814	8,112	7,963	-1.8	1.9
Edible cooking Oils (OKI)	2 litre	7,021	7,354	7,354	0.0	4.7
Green Cooking Bananas	1kg	742	1,078	1,266	17.5	70.7
Yellow Cooking Bananas	1kg	1,745	2,260	2,158	-4.5	23.7
Sugar	1kg	1,329	1,516	1,516	0.0	14.1
Cement	50 kg	15,107	15,151	15,151	0.0	0.3
Kerosene	1 litre	1,410	1,230	1,160	-5.7	-17.7
Charcoal	1Polo	12,161	13,072	13,072	0.0	7.5
Diesel	1 litre	1,960	1,890	1,810	-4.2	-7.7
Petrol	1 litre	1,920	1,850	1,830	-1.1	-4.7

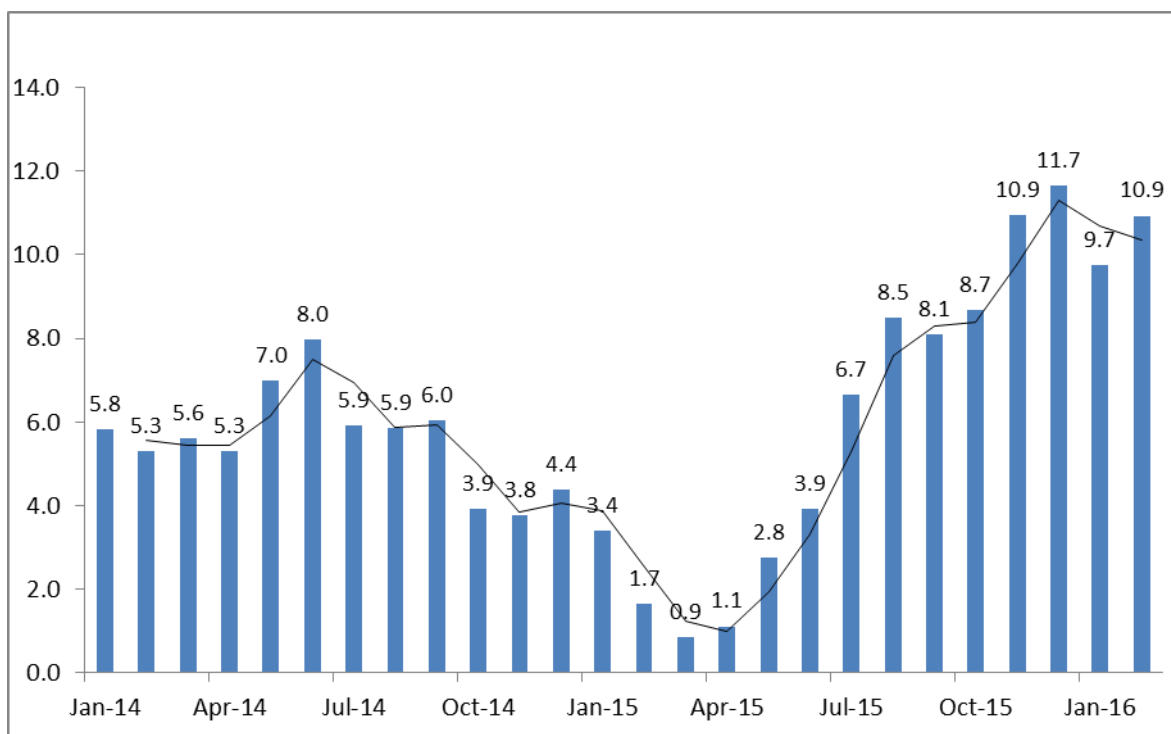
Source: Office of Chief Government Statistician, Zanzibar

Chart 1: Development of Inflation Rate for Selected groups from January, 2015 – February, 2016



Source: Office of Chief Government Statistician, Zanzibar

Chart 2: Zanzibar Inflation Rate 2014 – 2016



Source: Office of Chief Government Statistician, Zanzibar

The CPI measures the average percentage changes over time (between two time periods) in the prices of a “basket” of consumer goods and services acquired by households (the market basket) in Zanzibar. The Zanzibar CPI covers prices of 269 items collected in 316 outlets in Unguja and Pemba urban Centers. The goods and services included in the ZCPI basket are classified according to the UN COICOP (Classification of Individual Consumption According by Purpose) with 12 divisions.

The ZCPI weights are based on both monetary and non-momentary expenditures relating to consumption for households in Zanzibar for the 2009/10 Household Budget Survey (HBS). The weight is based on expenditures of both urban and rural households and was updated in August 2012. Both base price and index has reference period of August (2012=100).

**For more clarifications please contact:
OFFICE OF CHIEF GOVERNMENT STATISTICIAN
Director: Head Economic Statistics Section

CHIEF GOVERNMENT STATISTICIAN**

Appendix 1

		Indices			Monthly % Change			Annually % Change		
		Core Exclude	Rice, Wheat		Core Exclude	Rice, Wheat		Core Exclude	Rice, Wheat	
		Energy and Fuels	Food and Energy	Flour and Sugar Index	Energy and Fuels	Food and Energy	Flour and Sugar Index	Energy and Fuels	Food and Energy	Flour and Sugar Index
Share		10.6	78.7	14.6						
2013	Jan	103.7	100.2	103.2						
	Feb	101.3	101.2	103.1	-2.3	1.0	0.0			
	Mar	101.6	101.6	103.3	0.3	0.4	0.2			
	Apr	104.2	103.5	102.2	2.6	2.0	-1.1			
	May	105.7	102.6	100.9	1.4	-0.9	-1.3			
	Jun	102.9	102.5	98.2	-2.7	-0.2	-2.6			
	Jul	103.6	107.0	97.7	0.8	4.4	-0.5			
	Aug	104.9	106.9	97.5	1.2	-0.1	-0.2			
	Sep	106.5	105.3	96.8	1.5	-1.4	-0.8			
	Oct	107.3	106.5	96.8	0.8	1.1	0.0			
	Nov	107.2	107.0	96.4	-0.1	0.4	-0.4			
	Dec	107.0	105.2	96.9	-0.2	-1.7	0.5			
2014	Jan	107.0	109.1	95.8	0.0	3.8	-1.1	3.2	9.0	-7.2
	Feb	106.8	109.3	95.9	-0.1	0.2	0.1	5.5	8.0	-7.1
	Mar	107.1	110.1	96.2	0.3	0.7	0.3	5.5	8.4	-6.9
	Apr	107.1	112.0	96.0	0.0	1.8	-0.2	2.8	8.2	-6.1
	May	108.1	113.1	95.6	0.9	0.9	-0.4	2.2	10.2	-5.2
	Jun	113.5	112.9	95.6	5.0	-0.2	0.0	10.3	10.2	-2.7
	Jul	113.5	114.9	95.6	0.0	1.7	0.0	9.5	7.4	-2.2
	Aug	112.4	114.8	95.6	-0.9	0.0	0.0	7.2	7.4	-2.0
	Sep	111.1	113.6	95.6	-1.2	-1.1	0.0	4.3	7.8	-1.2
	Oct	111.1	111.9	96.3	0.0	-1.4	0.7	3.5	5.1	-0.4
	Nov	111.1	111.7	97.6	0.0	-0.2	1.3	3.6	4.5	1.2
	Dec	111.5	110.9	97.5	0.3	-0.8	0.0	4.2	5.4	0.7
2015	Jan	105.4	114.3	98.0	-5.4	3.1	0.5	-1.4	4.7	2.4
	Feb	104.7	112.3	96.5	-0.7	-1.7	-1.5	-2.0	2.7	0.7
	Mar	96.2	113.3	96.6	-8.1	0.9	0.1	-10.1	2.9	0.5
	Apr	96.4	115.3	97.6	0.2	1.8	1.0	-10.0	3.0	1.7
	May	100.7	117.4	101.4	4.4	1.7	4.0	-6.8	3.8	6.1
	Jun	100.4	118.8	103.3	-0.3	1.2	1.8	-11.5	5.2	8.0
	Jul	106.9	122.9	107.8	6.5	3.5	4.3	-5.8	7.0	12.7
	Aug	106.9	125.0	109.4	0.0	1.7	1.6	-4.9	8.9	14.5
	Sep	102.0	123.8	108.6	-4.6	-1.0	-0.8	-8.2	9.0	13.6
	Oct	102.0	123.0	108.8	0.0	-0.6	0.2	-8.2	9.9	13.0
	Nov	102.0	126.2	110.2	0.0	2.5	1.2	-8.2	12.9	12.9
	Dec	100.7	126.3	110.2	-1.2	0.1	0.0	-9.7	13.9	12.9
2016	Jan	102.0	126.0	111.6	1.2	-0.2	1.3	-3.3	10.3	13.8
	Feb	100.2	125.7	109.9	-1.7	-0.2	-1.5	-4.3	12.0	13.8