



STATISTICAL RELEASE

DECEMBER - 2016

P.O. Box 2321, Zanzibar
Telephone +255 24 223 1869
Fax: +255 24 223 174 2

Email: zanstat@ocgs.go.tz

Website: <http://www.ocgs.go.tz>

28TH DECEMBER, 2016

ZANZIBAR CONSUMER PRICE INDEX (CPI) FOR DECEMBER, 2016

ANNUAL HEADLINE INFLATION RATE INCREASED TO 3.0 PERCENT

Zanzibar Annual Headline Inflation rate for the year ended December, 2016 increased to 3.0 percent compared to 2.3 percent recorded in November, 2016. Food and Non-Alcoholic Beverages inflation rate increased to 1.2 percent in December 2016 from 0.4 percent recorded in November, 2016. The overall Index increased to 124.8 in December, 2016 compared to 121.1 recorded in December, 2015 (**Table 1**).

TABLE 1: CHANGES IN CONSUMER PRICE INDICES FOR DECEMBER, 2016

(BASE AUG. 2012 = 100)

Description	Weights	INDICES			Nov 2016 to Dec 2016 % Change	Dec 2015 to Dec 2016 % Change
		Dec-15	Nov-16	Dec-16		
Food and Non-Alcoholic Beverages	49.5	119.1	119.5	120.5	0.9	1.2
Alcohol Beverages, Tobacco and Narcotics	0.3	115.4	119.6	119.6	0.0	3.7
Clothing and Footwear	9.3	129.3	134.7	135.4	0.5	4.7
Housing, Water, Electricity, Gas, and Other Fuels	17.1	118.0	123.6	124.5	0.7	5.5
Furnishing, Household Equipment and Routine Household Maintenance	4.6	116.4	118.9	119.1	0.1	2.3
Health	2.8	116.7	128.4	128.4	0.0	10.0
Transport	6.3	102.4	103.9	104.9	1.0	2.4
Communication	2.6	200.4	199.4	199.4	0.0	-0.5
Recreation and Culture	0.8	130.3	132.8	132.8	0.0	1.9
Education	1.3	138.1	150.6	150.6	0.0	9.1
Restaurants and Hotels	2.1	133.2	141.9	141.3	-0.4	6.1
Miscellaneous Goods and Services	3.2	131.1	143.1	143.8	0.5	9.7
All Items	100.0	121.1	123.9	124.8	0.7	3.0

Source: Office of Chief Government Statistician, Zanzibar

Annual price noticed in the group of Food and Non-Alcoholic Beverages increased to 1.2 percent driven by Thailand Rice (0.1%), Jasmin Rice (4.5%), Basmat Rice (5.8%), Maize Flour (18.1%), Fish items (5.0%), green Cooking Bananas (0.2%), yellow Cooking Bananas (15.1%) and sugar (33.4%).

Annual Transport group increased to 2.4 percent driven by Diesel (2.6%) and Petrol (5.7%).

ANNUAL INFLATION RATE FOR OTHER DERIVED STATISTICS

Annual Inflation Rate for all items excludes food consumed at home and at restaurants (S1) increased to 4.9 percent from 4.1 as recorded in November 2016. Annual inflation rate for food consumed at home and at restaurants (S2) increased to 1.4 percent in December, 2016 from 0.6 percent recorded in November, 2016. Annual inflation rate for Energy and Fuels (S3) (Petrol, Diesel, Kerosene, Charcoal, Electricity, Gas and Firewood) increased to 6.3 percent in December, 2016 from 3.2 as recorded in November, 2016. Annual Core inflation rate (S4) (Exclude Rice, Wheat Flour, Sugar, Petrol, Diesel, kerosene, and Charcoal) increased to 2.3 percent in December, 2016 from 1.6 percent in November, 2016. Annual inflation rate for Fish (S5) increased to 7.0 percent in December, 2016 from -8.1 percent recorded in November, 2016. Annual Inflation rate for Rice, Wheat Flour, and Sugar (S6) decreased to 5.4 percent in December, 2016 compared to 6.0 percent in November, 2016 (**Table 2**)

TABLE 2: OTHER DERIVED STATISTICS

Description	Weights	INDICES			Nov 2016 to Dec 2016 % Change	Dec 2015 to Dec 2016 % Change
		Dec-15	Nov-16	Dec-16		
All Item Exclude Food (S1)	48.4	122.6	127.9	128.6	0.5	4.9
Food (S2)	51.6	119.7	120.3	121.3	0.8	1.4
Energy and Fuels (S3)	10.6	100.7	105.2	107.1	1.8	6.3
Core Exclude Food and Energy (S4)	78.7	126.3	128.2	129.1	0.7	2.3
Fish Index (S5)	6.5	107.1	110.9	114.6	3.3	7.0
Rice, Wheat Flour and Sugar Index (S6)	14.6	110.2	116.8	116.1	-0.5	5.4

Source: Office of Chief Government Statistician, Zanzibar

MONTHLY INFLATION RATE INCREASED TO 0.7 PERCENT IN DECEMBER, 2016

During December, 2016 the Monthly Inflation rate increased to 0.7 percent compared to 0.4 percent recorded in November, 2016. The monthly Food and Non-Alcoholic Beverages inflation rate in December, 2016 increased to 0.9 percent compared to 0.1 percent in November, 2016 (**Table 1**)

Monthly Inflation Rate for all items exclude food consumed at home and at restaurants (S1) in December, 2016 decreased to 0.5 percent compared to 0.6 percent recorded in November, 2016. Monthly inflation rate for food consumed at home and at restaurants (S2) increased to 0.8 percent in December, 2016 compared to 0.1 percent registered in November, 2016. Monthly inflation rate of Energy and Fuels (Petrol, Diesel, kerosene, electricity, gas, Charcoal and Firewood) (S3) decreased to 1.8 percent in December, 2016 compared to 2.4 percent registered in November, 2016. Monthly Core inflation rate (S4) (Exclude Rice, Wheat Flour, Sugar, Petrol, Diesel, Kerosene, and Charcoal) increased to 0.7 percent in December, 2016 compared to 0.2 percent recorded in November, 2016. Monthly inflation rate for fish (S5) increased to 3.3 percent in December, 2016 compared to -1.3 percent in November, 2016. Monthly Inflation rate for Rice, Wheat Flour and Sugar (S6) was -0.5 percent in December, 2016 compared to 1.3 percent registered in November, 2016 (**Table 2**)

MOVEMENT OF AVERAGE PRICES FOR SELECTED ITEMS

The Monthly inflation rate in December, 2016 was 0.7 percent contributed by items such as Maize Flour (10.4%), Fish (1.9%), Green Cooking Banana (5.0%), Yellow Cooking Banana (5.6%), Kerosene (5.8%), Diesel (4.0%) and Petrol (1.6%) (Table 3)

Table 3: Monthly Average Prices for Selected Items 2015 - 2016

Items	Unit	Dec-15	Nov-16	Dec-16	% Monthly	% Annually
Thailand rice (Mapembe)	1 kg	1,299	1,300	1,300	0.0	0.1
Mbeya	1 kg	2,282	2,277	2,241	-1.6	-1.8
Jasmi	1 kg	1,864	1,948	1,948	0.0	4.5
Basmat	1 kg	3,143	3,476	3,325	-4.4	5.8
Flatbread (Boflo)	0.5kg	1,012	1,007	932	-7.5	-7.9
Maize Flour	1kg	1,183	1,265	1,396	10.4	18.1
Wheat Flour	1kg	1,299	1,297	1,297	0.0	-0.1
Fish	1kg	7,755	7,990	8,145	1.9	5.0
Edible cooking Oils (OKI)	2 litre	7,354	7,354	7,354	0.0	0.0
Green Cooking Bananas	1kg	1,119	1,068	1,122	5.0	0.2
Yellow Cooking Bananas	1kg	2,213	2,412	2,548	5.6	15.1
Sugar	1kg	1,448	1,966	1,932	-1.7	33.4
Cement	50 kg	15,202	15,908	15,908	0.0	4.6
Kerosene	1 litre	1,230	1,290	1,365	5.8	11.0
Charcoal	1Polo	12,107	12,780	12,780	0.0	5.6
Diesel	1 litre	1,890	1,865	1,940	4.0	2.6
Petrol	1 litre	1,850	1,925	1,955	1.6	5.7

Source: Office of Chief Government Statistician, Zanzibar

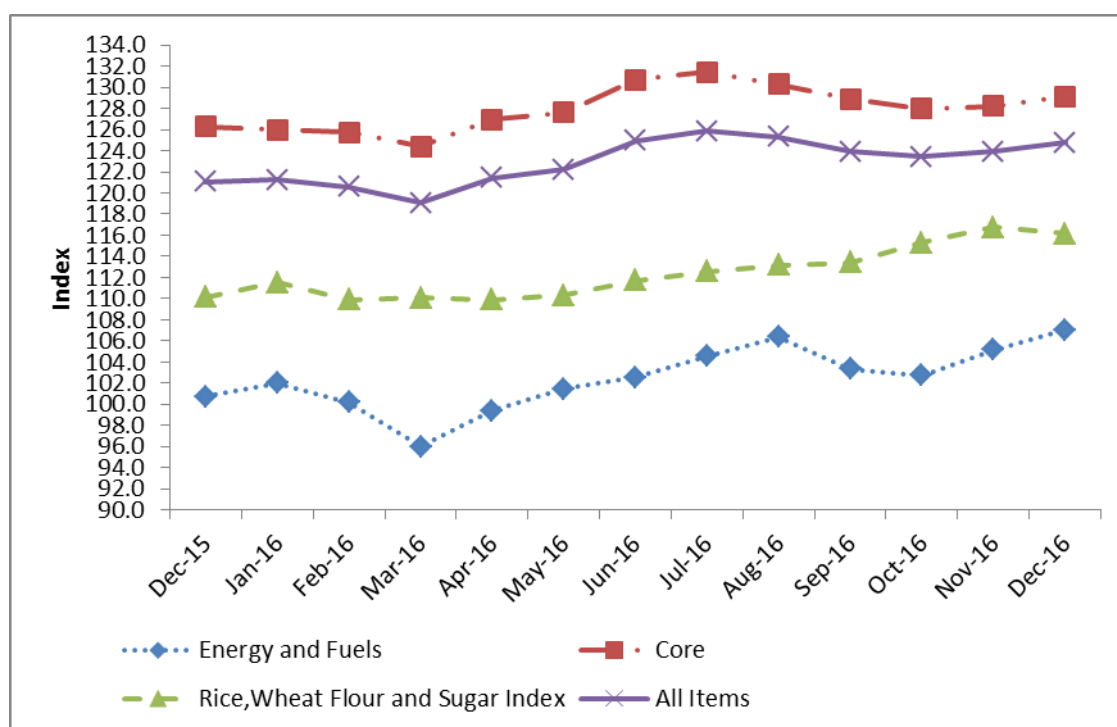
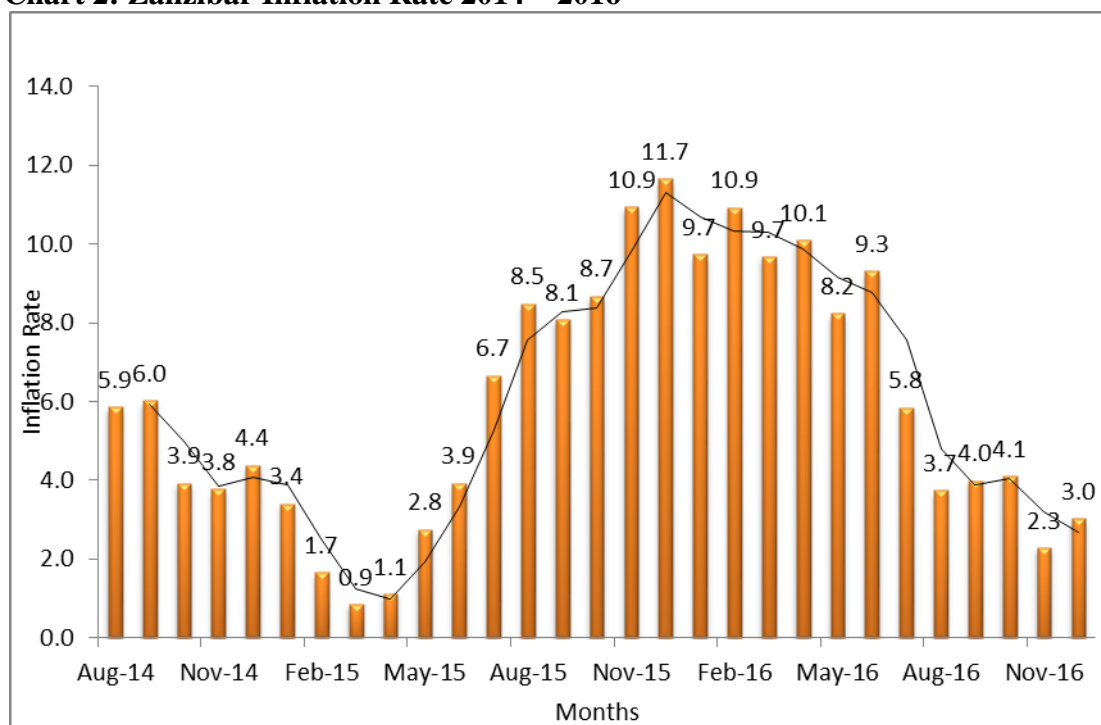


Chart 1: Development of Inflation Rate for Selected groups from December 2015 to December, 2016

Source: Office of Chief Government Statistician, Zanzibar

Chart 2: Zanzibar Inflation Rate 2014 – 2016



Source: Office of Chief Government Statistician, Zanzibar

The CPI measures the average percentage changes over time (between two time periods) in the prices of a “basket” of consumer goods and services acquired by households (the market basket) in Zanzibar. The Zanzibar CPI covers prices of 269 items collected in 316 outlets in Unguja and Pemba urban Centers. The goods and services included in the ZCPI basket are classified according to the UN COICOP (Classification of Individual Consumption According by Purpose) with 12 divisions.

The ZCPI weights are based on both monetary and non-momentary expenditures relating to consumption for households in Zanzibar for the 2009/10 Household Budget Survey (HBS). The weight is based on expenditures of both urban and rural households and was updated in August 2012. Both base price and index has reference period of August (2012=100).

**For more clarifications please contact:
OFFICE OF CHIEF GOVERNMENT STATISTICIAN
Director: Economic Statistics Section

CHIEF GOVERNMENT STATISTICIAN**

Appendix 1

		Indices			Monthly % Change			Annually % Change		
		Energy and Fuels	Core Exclude Food and Energy	Rice, Wheat Flour and Sugar Index	Energy and Fuels	Core Exclude Food and Energy	Rice, Wheat Flour and Sugar Index	Energy and Fuels	Core Exclude Food and Energy	Rice, Wheat Flour and Sugar Index
Share		10.6	78.7	14.6						
2013	Jan	103.7	100.2	103.2						
	Feb	101.3	101.2	103.1	-2.3	1.0	0.0			
	Mar	101.6	101.6	103.3	0.3	0.4	0.2			
	Apr	104.2	103.5	102.2	2.6	2.0	-1.1			
	May	105.7	102.6	100.9	1.4	-0.9	-1.3			
	Jun	102.9	102.5	98.2	-2.7	-0.2	-2.6			
	Jul	103.6	107.0	97.7	0.8	4.4	-0.5			
	Aug	104.9	106.9	97.5	1.2	-0.1	-0.2			
	Sep	106.5	105.3	96.8	1.5	-1.4	-0.8			
	Oct	107.3	106.5	96.8	0.8	1.1	0.0			
	Nov	107.2	107.0	96.4	-0.1	0.4	-0.4			
	Dec	107.0	105.2	96.9	-0.2	-1.7	0.5			
2014	Jan	107.0	109.1	95.8	0.0	3.8	-1.1	3.2	9.0	-7.2
	Feb	106.8	109.3	95.9	-0.1	0.2	0.1	5.5	8.0	-7.1
	Mar	107.1	110.1	96.2	0.3	0.7	0.3	5.5	8.4	-6.9
	Apr	107.1	112.0	96.0	0.0	1.8	-0.2	2.8	8.2	-6.1
	May	108.1	113.1	95.6	0.9	0.9	-0.4	2.2	10.2	-5.2
	Jun	113.5	112.9	95.6	5.0	-0.2	0.0	10.3	10.2	-2.7
	Jul	113.5	114.9	95.6	0.0	1.7	0.0	9.5	7.4	-2.2
	Aug	112.4	114.8	95.6	-0.9	0.0	0.0	7.2	7.4	-2.0
	Sep	111.1	113.6	95.6	-1.2	-1.1	0.0	4.3	7.8	-1.2
	Oct	111.1	111.9	96.3	0.0	-1.4	0.7	3.5	5.1	-0.4
	Nov	111.1	111.7	97.6	0.0	-0.2	1.3	3.6	4.5	1.2
	Dec	111.5	110.9	97.5	0.3	-0.8	0.0	4.2	5.4	0.7
2015	Jan	105.4	114.3	98.0	-5.4	3.1	0.5	-1.4	4.7	2.4
	Feb	104.7	112.3	96.5	-0.7	-1.7	-1.5	-2.0	2.7	0.7
	Mar	96.2	113.3	96.6	-8.1	0.9	0.1	-10.1	2.9	0.5
	Apr	96.4	115.3	97.6	0.2	1.8	1.0	-10.0	3.0	1.7
	May	100.7	117.4	101.4	4.4	1.7	4.0	-6.8	3.8	6.1
	Jun	100.4	118.8	103.3	-0.3	1.2	1.8	-11.5	5.2	8.0
	Jul	106.9	122.9	107.8	6.5	3.5	4.3	-5.8	7.0	12.7
	Aug	106.9	125.0	109.4	0.0	1.7	1.6	-4.9	8.9	14.5
	Sep	102.0	123.8	108.6	-4.6	-1.0	-0.8	-8.2	9.0	13.6
	Oct	102.0	123.0	108.8	0.0	-0.6	0.2	-8.2	9.9	13.0
	Nov	102.0	126.2	110.2	0.0	2.5	1.2	-8.2	12.9	12.9
	Dec	100.7	126.3	110.2	-1.2	0.1	0.0	-9.7	13.9	12.9
2016	Jan	102.0	126.0	111.6	1.2	-0.2	1.3	-3.3	10.3	13.8
	Feb	100.2	125.7	109.9	-1.7	-0.2	-1.5	-4.3	12.0	13.8
	Mar	96.0	124.4	110.1	-4.2	-1.1	0.2	-0.3	9.8	13.9
	Apr	99.4	127.0	109.9	3.6	2.1	-0.2	3.1	10.1	12.6
	May	101.4	127.6	110.3	2.0	0.5	0.4	0.8	8.8	8.8
	June	102.6	130.7	111.7	1.1	2.4	1.2	2.1	10.0	8.1
	July	104.6	131.4	112.6	1.9	0.5	0.8	-2.2	6.9	4.5
	August	106.4	130.3	113.2	1.8	-0.9	0.5	-0.5	4.2	3.4
	Sept	103.4	128.9	113.4	-2.9	-1.1	0.2	1.4	4.1	4.4
	Oct	102.7	128.0	115.3	-0.6	-0.7	1.7	0.8	4.0	5.9
	Nov	105.2	128.2	116.8	2.4	0.2	1.3	3.2	1.6	6.0
	Dec	107.1	129.1	116.1	1.8	0.7	-0.5	6.3	2.3	5.4