



# STATISTICAL RELEASE

## JUNE - 2016

P.O. Box 2321, Zanzibar  
Telephone +255 24 223 1869  
Fax: +255 24 223 174 2

Email: [zanstat@ocgs.go.tz](mailto:zanstat@ocgs.go.tz)

Website: <http://www.ocgs.go.tz>

**28<sup>TH</sup> JUNE, 2016**

### ZANZIBAR CONSUMER PRICE INDEX (CPI) FOR JUNE, 2016

#### ANNUAL HEADLINE INFLATION RATE INCREASED TO 9.3 PERCENT

Zanzibar Annual Headline Inflation rate for the year ended June, 2016 increased to 9.3 percent compared to 8.2 percent recorded in May, 2016. Food and Non-Alcoholic Beverages inflation rate increased to 12.7 percent in June 2016 from 10.7 percent recorded in May 2016. The overall Index increased to 124.9 in June, 2016 compared to 114.3 recorded in June, 2015 (**Table 1**).

**TABLE 1: CHANGES IN CONSUMER PRICE INDICES FOR JUNE, 2016**

(BASE AUG. 2012 = 100)

Description	Weights	INDICES			May 2016 to June 2016 % Change	June 2015 to June 2016 % Change
		Jun-15	May-16	Jun-16		
Food and Non-Alcoholic Beverages	49.5	109.8	119.6	123.7	3.4	12.7
Alcohol Beverages, Tobacco and Narcotics	0.3	112.8	115.4	115.4	0.0	2.4
Clothing and Footwear	9.3	123.6	130.8	132.1	1.0	6.9
Housing, Water, Electricity, Gas, and Other Fuels	17.1	118.5	119.0	120.7	1.4	1.9
Furnishing, Household Equipment and Routine Household Maintenance	4.6	111.4	117.6	118.1	0.4	5.9
Health	2.8	111.7	121.4	124.8	2.8	11.7
Transport	6.3	100.2	101.4	102.8	1.3	2.5
Communication	2.6	184.1	199.4	199.6	0.1	8.4
Recreation and Culture	0.8	128.3	130.3	129.5	-0.6	1.0
Education	1.3	138.1	150.6	150.6	0.0	9.1
Restaurants and Hotels	2.1	104.8	147.0	147.0	0.0	40.3
Miscellaneous Goods and Services	3.2	124.8	133.9	134.9	0.8	8.1
<b>All Items</b>	<b>100.0</b>	<b>114.3</b>	<b>122.2</b>	<b>124.9</b>	<b>2.2</b>	<b>9.3</b>

Source: Office of Chief Government Statistician, Zanzibar

Annual Food and Non-Alcoholic Beverages group increased to 12.7 percent driven by Thailand Rice (6.9%), Mbeya Rice (4.3%), Jasmin Rice (3.6%), Basmati (4.3%), Wheat Flour (8.2%), Maize Flour (20.4%), Green Cooking Banana (26.0%), Yellow Cooking Banana (41.8%), Sugar (15.5%), Cassava (48.8%), Potatoes (48.8%) and Fish (25.6%).

Housing, Water, Electricity, Gas, and Other Fuels group increased to 1.9% driven by Water Paint (23.4%), Oil Paint (22.3%) and Cement (8.7%).

### ANNUAL INFLATION RATE FOR OTHER DERIVED STATISTICS

Annual Inflation Rate for all items exclude food consumed at home and at restaurants (S1) increased to 4.8 percent in June 2016 compared to 4.5 percent recorded in May 2016. Annual inflation rate for food consumed at home and at restaurants (S2) increased to 13.7 percent in June, 2016 from 11.9 percent recorded in May, 2016. Annual inflation rate for Energy and Fuels (S3) (Petrol, Diesel, Kerosene, Charcoal, Electricity, Gas and Firewood) increased to 2.1 percent in June, 2016 compared to 0.8 recorded in May 2016. Annual Core inflation rate (S4) (Exclude Rice, Wheat Flour, Sugar, Petrol, Diesel, kerosene, and Charcoal) increased to 10.0 percent in June, 2016 from 8.8 percent in May, 2016. Annual inflation rate for Fish (S5) increased to 21.7 percent in June, 2016 compared to 3.3 percent recorded in May, 2016. Annual Inflation rate for Rice, Wheat Flour, and Sugar (S6) decreased to 8.1 percent in June, 2016 compared to 8.8 percent in May, 2016 (**Table 2**)

**TABLE 2: OTHER DERIVED STATISTICS**

Description	Weights	INDICES			May 2016 to June 2016 % Change	June 2015 to June 2016 % Change
		Jun-15	May-16	Jun-16		
All Item Exclude Food (S1)	<b>48.4</b>	119.6	123.9	125.3	1.1	4.8
Food (S2)	<b>51.6</b>	109.6	120.7	124.6	3.2	13.7
Energy and Fuels (S3)	<b>10.6</b>	100.4	101.4	102.6	1.1	2.1
Core Exclude Food and Energy (S4)	<b>78.7</b>	118.8	127.6	130.7	2.4	10.0
Fish Index (S5)	<b>6.5</b>	100.8	101.3	122.7	21.2	21.7
Rice, Wheat Flour and Sugar Index (S6)	<b>14.6</b>	103.3	110.3	111.7	1.2	8.1

**Source:** Office of Chief Government Statistician, Zanzibar

### MONTHLY INFLATION RATE INCREASED TO 2.2 PERCENT IN JUNE, 2016

During June, 2016 the Monthly Inflation rate increased to 2.2 percent compared to 0.7 percent recorded in May, 2016. The monthly Food and Non-Alcoholic Beverages inflation rate in June, 2016 increased to 3.4 percent compared to 0.2 percent in May, 2016 (**Table 1**)

Monthly Inflation Rate for all items exclude food consumed at home and at restaurants (S1) increased to 1.1 percent in June 2016 compared to 0.8 percent registered in May, 2016. Monthly inflation rate for food consumed at home and at restaurants (S2) increased to 3.2 percent in June, 2016 compared to 0.5 percent registered in May, 2016. Monthly inflation rate for Energy and Fuels (S3) (Petrol, Diesel, kerosene, electricity, gas, Charcoal and Firewood) decreased to 1.1 percent in June, 2016 compared to 2.0 percent registered in May, 2016. Monthly Core inflation rate (S4) (Exclude Rice, Wheat Flour, Sugar, Petrol, Diesel, Kerosene, and Charcoal) increased to 2.4 percent in June, 2016 compared to 0.5 percent recorded in May, 2016. Monthly inflation rate for fish (S5) increased to 21.2 percent in June, 2016 compared to -5.2 percent registered in May, 2016. Monthly Inflation rate for Rice, Wheat Flour and Sugar (S6) increased to 1.2 percent in June, 2016 compared to 0.4 percent registered in May, 2016. (**Table 2**)

### MOVEMENT OF AVERAGE PRICES FOR SELECTED ITEMS

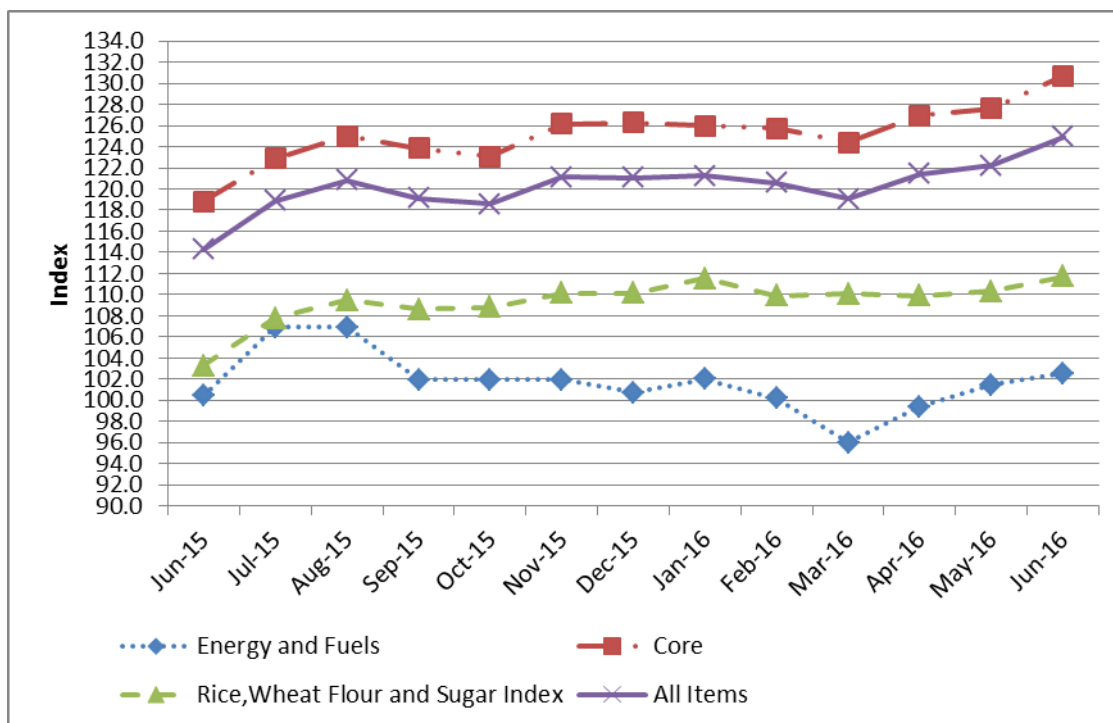
The increasing of Monthly inflation rate to 2.2 percent for the month of June, 2016 was contributed by increasing prices of items such as Fish (8.4%), Green Cooking Banana (18.6%), Yellow Cooking Banana (38.2%), Maize Flour (1.3%), Coconut (9.8%), Sugar (5.4%), Petrol (3.8%), Kerosene (1.6%), and Diesel (1.7%).(**Table 3**)

**Table 3: Monthly Average Prices for Selected Items 2015 - 2016**

Items	Unit	Jun-15	May-16	Jun-16	% Monthly	% Annually
Thailand rice (Mapembe)	1 kg	1,200	1,266	1,283	1.3	6.9
Mbeya	1 kg	2,165	2,331	2,258	-3.1	4.3
Jasmi	1 kg	1,800	1,864	1,864	0.0	3.6
Basmat	1 kg	3,143	3,286	3,286	0.0	4.6
Flatbread (Boflo)	0.5kg	900	902	908	0.6	0.9
Maize Flour	1kg	1,064	1,265	1,282	1.3	20.4
Wheat Flour	1kg	1,199	1,315	1,297	-1.3	8.2
Fish	1kg	7,147	8,281	8,973	8.4	25.6
Edible cooking Oils (OKI)	2 litre	7,021	7,613	7,613	0.0	8.4
Green Cooking Bananas	1kg	960	1,020	1,210	18.6	26.0
Yellow Cooking Bananas	1kg	2,390	2,451	3,387	38.2	41.8
Sugar	1kg	1,414	1,549	1,633	5.4	15.5
Cement	50 kg	14,807	16,986	16,097	-5.2	8.7
Kerosene	1 litre	1,265	1,215	1,235	1.6	-2.4
Charcoal	1Polo	12,301	13,263	13,223	-0.3	7.5
Diesel	1 litre	1,795	1,750	1,780	1.7	-0.8
Petrol	1 litre	1,780	1,860	1,930	3.8	8.4

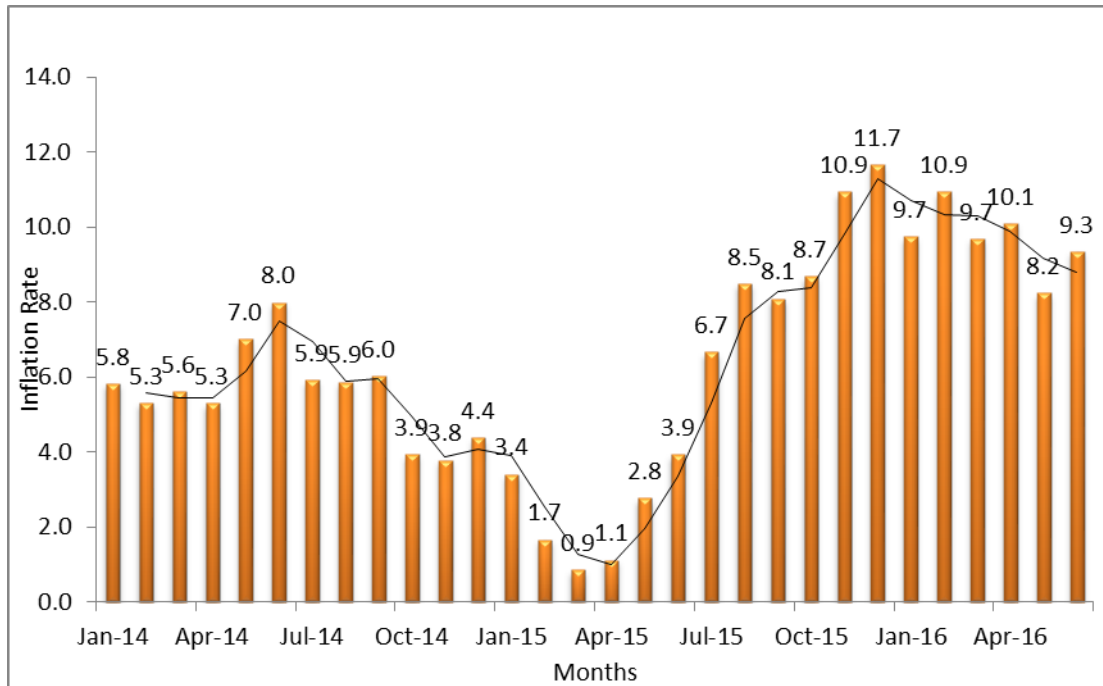
**Source:** Office of Chief Government Statistician, Zanzibar

**Chart 1: Development of Inflation Rate for Selected groups from June, 2015 – June, 2016**



**Source:** Office of Chief Government Statistician, Zanzibar

**Chart 2: Zanzibar Inflation Rate 2014 – 2016**



**Source:** Office of Chief Government Statistician, Zanzibar

The CPI measures the average percentage changes over time (between two time periods) in the prices of a “basket” of consumer goods and services acquired by households (the market basket) in Zanzibar. The Zanzibar CPI covers prices of 269 items collected in 316 outlets in Unguja and Pemba urban Centers. The goods and services included in the ZCPI basket are classified according to the UN COICOP (Classification of Individual Consumption According by Purpose) with 12 divisions.

The ZCPI weights are based on both monetary and non-momentary expenditures relating to consumption for households in Zanzibar for the 2009/10 Household Budget Survey (HBS). The weight is based on expenditures of both urban and rural households and was updated in August 2012. Both base price and index has reference period of August (2012=100).

**For more clarifications please contact:  
OFFICE OF CHIEF GOVERNMENT STATISTICIAN  
Director: Head Economic Statistics Section**

**CHIEF GOVERNMENT STATISTICIAN**

---

## Appendix 1

		Indices			Monthly % Change			Annually % Change		
		Energy and Fuels	Core Exclude Food and Energy	Rice, Wheat Flour and Sugar Index	Energy and Fuels	Core Exclude Food and Energy	Rice, Wheat Flour and Sugar Index	Energy and Fuels	Core Exclude Food and Energy	Rice, Wheat Flour and Sugar Index
Share		10.6	78.7	14.6						
2013	Jan	103.7	100.2	103.2						
	Feb	101.3	101.2	103.1	-2.3	1.0	0.0			
	Mar	101.6	101.6	103.3	0.3	0.4	0.2			
	Apr	104.2	103.5	102.2	2.6	2.0	-1.1			
	May	105.7	102.6	100.9	1.4	-0.9	-1.3			
	Jun	102.9	102.5	98.2	-2.7	-0.2	-2.6			
	Jul	103.6	107.0	97.7	0.8	4.4	-0.5			
	Aug	104.9	106.9	97.5	1.2	-0.1	-0.2			
	Sep	106.5	105.3	96.8	1.5	-1.4	-0.8			
	Oct	107.3	106.5	96.8	0.8	1.1	0.0			
	Nov	107.2	107.0	96.4	-0.1	0.4	-0.4			
	Dec	107.0	105.2	96.9	-0.2	-1.7	0.5			
2014	Jan	107.0	109.1	95.8	0.0	3.8	-1.1	3.2	9.0	-7.2
	Feb	106.8	109.3	95.9	-0.1	0.2	0.1	5.5	8.0	-7.1
	Mar	107.1	110.1	96.2	0.3	0.7	0.3	5.5	8.4	-6.9
	Apr	107.1	112.0	96.0	0.0	1.8	-0.2	2.8	8.2	-6.1
	May	108.1	113.1	95.6	0.9	0.9	-0.4	2.2	10.2	-5.2
	Jun	113.5	112.9	95.6	5.0	-0.2	0.0	10.3	10.2	-2.7
	Jul	113.5	114.9	95.6	0.0	1.7	0.0	9.5	7.4	-2.2
	Aug	112.4	114.8	95.6	-0.9	0.0	0.0	7.2	7.4	-2.0
	Sep	111.1	113.6	95.6	-1.2	-1.1	0.0	4.3	7.8	-1.2
	Oct	111.1	111.9	96.3	0.0	-1.4	0.7	3.5	5.1	-0.4
	Nov	111.1	111.7	97.6	0.0	-0.2	1.3	3.6	4.5	1.2
	Dec	111.5	110.9	97.5	0.3	-0.8	0.0	4.2	5.4	0.7
2015	Jan	105.4	114.3	98.0	-5.4	3.1	0.5	-1.4	4.7	2.4
	Feb	104.7	112.3	96.5	-0.7	-1.7	-1.5	-2.0	2.7	0.7
	Mar	96.2	113.3	96.6	-8.1	0.9	0.1	-10.1	2.9	0.5
	Apr	96.4	115.3	97.6	0.2	1.8	1.0	-10.0	3.0	1.7
	May	100.7	117.4	101.4	4.4	1.7	4.0	-6.8	3.8	6.1
	Jun	100.4	118.8	103.3	-0.3	1.2	1.8	-11.5	5.2	8.0
	Jul	106.9	122.9	107.8	6.5	3.5	4.3	-5.8	7.0	12.7
	Aug	106.9	125.0	109.4	0.0	1.7	1.6	-4.9	8.9	14.5
	Sep	102.0	123.8	108.6	-4.6	-1.0	-0.8	-8.2	9.0	13.6
	Oct	102.0	123.0	108.8	0.0	-0.6	0.2	-8.2	9.9	13.0
	Nov	102.0	126.2	110.2	0.0	2.5	1.2	-8.2	12.9	12.9
	Dec	100.7	126.3	110.2	-1.2	0.1	0.0	-9.7	13.9	12.9
2016	Jan	102.0	126.0	111.6	1.2	-0.2	1.3	-3.3	10.3	13.8
	Feb	100.2	125.7	109.9	-1.7	-0.2	-1.5	-4.3	12.0	13.8
	Mar	96.0	124.4	110.1	-4.2	-1.1	0.2	-0.3	9.8	13.9
	Apr	99.4	127.0	109.9	3.6	2.1	-0.2	3.1	10.1	12.6
	May	101.4	127.6	110.3	2.0	0.5	0.4	0.8	8.8	8.8