



STATISTICAL RELEASE

AUGUST - 2016

P.O. Box 2321, Zanzibar
Telephone +255 24 223 1869
Fax: +255 24 223 174 2

Email: zanstat@ocgs.go.tz

Website: <http://www.ocgs.go.tz>

30TH AUGUST, 2016

ZANZIBAR CONSUMER PRICE INDEX (CPI) FOR AUGUST, 2016

ANNUAL HEADLINE INFLATION RATE DROPPED TO 3.7 PERCENT

Zanzibar Annual Headline Inflation rate for the year ended August, 2016 dropped to 3.7 percent compared to 5.8 percent recorded in July, 2016. Food and Non-Alcoholic Beverages inflation rate decreased to 4.2 percent in August 2016 from 7.4 percent recorded in July 2016. The overall Index increased to 125.3 in August, 2016 compared to 120.8 recorded in August, 2015 (**Table 1**).

TABLE 1: CHANGES IN CONSUMER PRICE INDICES FOR AUGUST, 2016

(BASE AUG. 2012 = 100)

Description	Weights	INDICES			July 2016 to Aug 2016 % Change	Aug 2015 to Aug 2016 % Change
		Aug-15	Jul-16	Aug-16		
Food and Non-Alcoholic Beverages	49.5	117.8	124.8	122.7	-1.7	4.2
Alcohol Beverages, Tobacco and Narcotics	0.3	114.8	119.6	119.6	0.0	4.2
Clothing and Footwear	9.3	130.2	133.4	133.7	0.2	2.7
Housing, Water, Electricity, Gas, and Other Fuels	17.1	120.0	121.6	122.6	0.8	2.2
Furnishing, Household Equipment and Routine Household Maintenance	4.6	114.1	118.2	118.8	0.5	4.1
Health	2.8	112.2	124.8	127.8	2.4	13.8
Transport	6.3	108.0	103.9	104.8	0.8	-2.9
Communication	2.6	200.1	199.6	199.6	0.0	-0.3
Recreation and Culture	0.8	129.9	131.0	132.1	0.8	1.7
Education	1.3	138.1	150.6	150.6	0.0	9.1
Restaurants and Hotels	2.1	126.5	140.1	142.5	1.7	12.7
Miscellaneous Goods and Services	3.2	128.8	138.5	141.1	1.9	9.5
All Items	100.0	120.8	125.9	125.3	-0.4	3.7

Source: Office of Chief Government Statistician, Zanzibar

Annual price declines have been noticed in the group of Food and Non-Alcoholic Beverages by 4.2 percent driven by Thailand Rice (-2.5%), Wheat Flour (-2.6%), Fish items (-3.4%), Green Cooking Banana (-3.2%), Tomatoes (-16.7%), Round Onion (-15.7%) and Beans (-2.3%).

Annual Clothing and Footwear group decreased 2.7 percent driven by Trousers New (-2.4%), Shirts (-0.2%), Boys Shirt Second hand (-5.1%), and Boys Trousers Second Hand (-9.6%).

Annual transport group decreased to -2.9 percent driven by Diesel and Petrol both decreased to (-6.9%).

ANNUAL INFLATION RATE FOR OTHER DERIVED STATISTICS

Annual Inflation Rate for all items exclude food consumed at home and at restaurants (S1) remains to 2.9 percent as recorded in July 2016. Annual inflation rate for food consumed at home and at restaurants (S2) decreased to 4.5 percent in August, 2016 from 8.7 percent recorded in July, 2016. Annual inflation rate for Energy and Fuels (S3) (Petrol, Diesel, Kerosene, Charcoal, Electricity, Gas and Firewood) decreased to -0.5 percent in August, 2016 compared to -2.2 percent recorded in July 2016. Annual Core inflation rate (S4) (Exclude Rice, Wheat Flour, Sugar, Petrol, Diesel, kerosene, and Charcoal) decreased to 4.2 percent in August, 2016 from 6.9 percent in July, 2016. Annual inflation rate for Fish (S5) decreased to -2.8 percent in August, 2016 compared to 8.1 percent recorded in July, 2016. Annual Inflation rate for Rice, Wheat Flour, and Sugar (S6) decreased to 3.4 percent in August, 2016 compared to 4.5 percent in July, 2016 (**Table 2**)

TABLE 2: OTHER DERIVED STATISTICS

Description	Weights	INDICES			July 2016 to Aug 2016 % Change	Aug 2015 to Aug 2016 % Change
		Aug-15	Jul-16	Aug-16		
All Item Exclude Food (S1)	48.4	123.7	126.3	127.3	0.8	2.9
Food (S2)	51.6	118.2	125.4	123.5	-1.5	4.5
Energy and Fuels (S3)	10.6	106.9	104.6	106.4	1.8	-0.5
Core Exclude Food and Energy (S4)	78.7	125.0	131.4	130.3	-0.9	4.2
Fish Index (S5)	6.5	123.5	123.1	120.1	-2.5	-2.8
Rice, Wheat Flour and Sugar Index (S6)	14.6	109.4	112.6	113.2	0.5	3.4

Source: Office of Chief Government Statistician, Zanzibar

MONTHLY INFLATION RATE INCREASED TO -0.4 PERCENT IN AUGUST, 2016

During August, 2016 the Monthly Inflation rate decreased to -0.4 percent compared to 0.7 percent recorded in July, 2016. The monthly Food and Non-Alcoholic Beverages inflation rate in August, 2016 decreased to -1.7 percent compared to 0.9 percent in July, 2016 (**Table 1**)

Monthly Inflation Rate for all items exclude food consumed at home and at restaurants (S1) remains to 0.8 percent as registered in July, 2016. Monthly inflation rate for food consumed at home and at restaurants (S2) decreased to -1.5 percent in August, 2016 compared to 0.7 percent registered in July, 2016. Monthly inflation rate for Energy and Fuels (Petrol, Diesel, kerosene, electricity, gas, Charcoal and Firewood) (S3) decreased to 1.8 percent in August, 2016 compared to 1.9 percent registered in July, 2016. Monthly Core inflation rate (S4) (Exclude Rice, Wheat Flour, Sugar, Petrol, Diesel, Kerosene, and Charcoal) decreased to -0.9 percent in August, 2016 compared to 0.5 percent recorded in July, 2016. Monthly inflation rate for fish (S5) decreased to -2.5 percent in August, 2016 compared to 0.3 percent registered in July, 2016. Monthly Inflation rate for Rice, Wheat Flour and Sugar (S6) decreased to 0.5 percent in August, 2016 compared to 0.8 percent registered in July, 2016. (**Table 2**)

MOVEMENT OF AVERAGE PRICES FOR SELECTED ITEMS

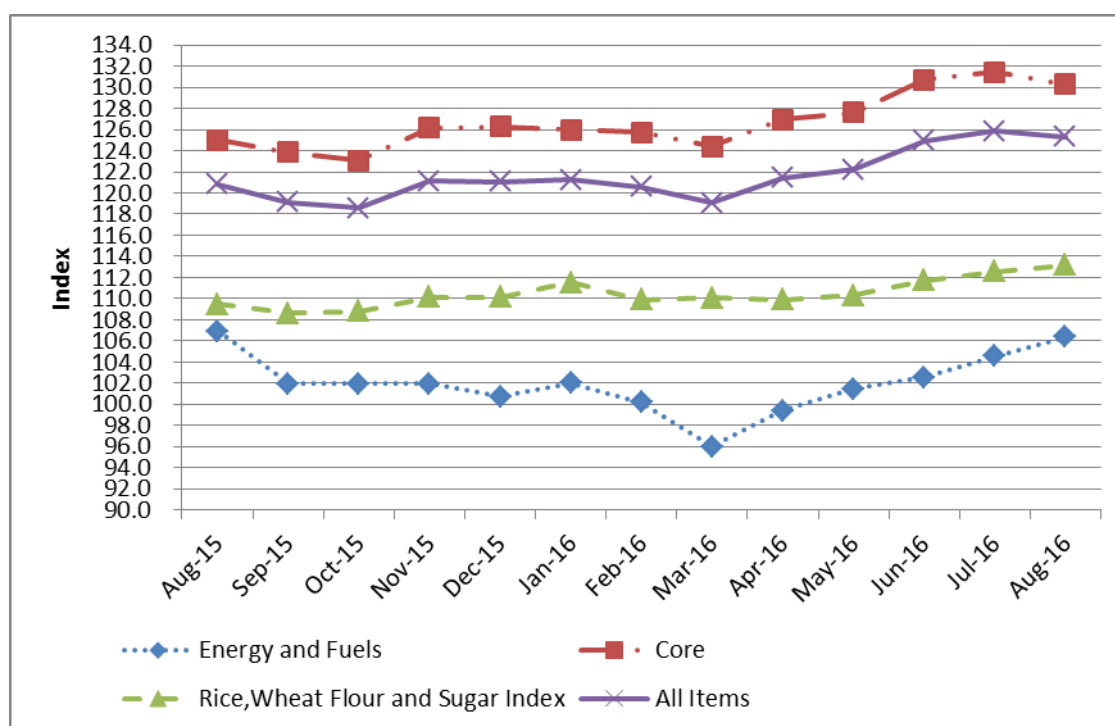
The decreasing of Monthly inflation rate to -0.4 percent for the month of August, 2016 was contributed by decreasing prices of items such as Fish (-5.6%), Green Cooking Banana (-15.2%), Yellow Cooking Banana (-9.1%), Octopus (-13.8%), Tomatoes (-42.1%), Round Onions (-35.8%), Cassava (-0.8%), Sweet Potatoes (-15.0%), and Cement (-3.2%).(Table 3)

Table 3: Monthly Average Prices for Selected Items 2015 - 2016

Items	Unit	Aug-15	Jul-16	Aug-16	% Monthly	% Annually
Thailand rice (Mapembe)	1 kg	1,316	1,283	1,283	0.0	-2.5
Mbeya	1 kg	2,080	2,295	2,295	0.0	10.3
Jasmi	1 kg	1,864	1,864	1,864	0.0	0.0
Basmat	1 kg	3,143	3,388	3,388	0.0	7.8
Flatbread (Boflo)	0.5kg	1,062	953	939	-1.5	-11.6
Maize Flour	1kg	1,149	1,282	1,282	0.0	11.5
Wheat Flour	1kg	1,333	1,297	1,297	0.0	-2.6
Fish	1kg	8,996	9,177	8,661	-5.6	-3.7
Edible cooking Oils (OKI)	2 litre	7,500	7,613	7,613	0.0	1.5
Green Cooking Bananas	1kg	1,210	1,381	1,172	-15.2	-3.2
Yellow Cooking Bananas	1kg	2,562	3,152	2,866	-9.1	11.9
Sugar	1kg	1,414	1,682	1,732	3.0	22.5
Cement	50 kg	15,604	16,097	15,589	-3.2	-0.1
Kerosene	1 litre	1,400	1,315	1,385	5.3	-1.1
Charcoal	1Polo	12,107	13,223	13,366	1.1	10.4
Diesel	1 litre	2,100	1,870	1,955	4.5	-6.9
Petrol	1 litre	2,115	1,955	1,970	0.8	-6.9

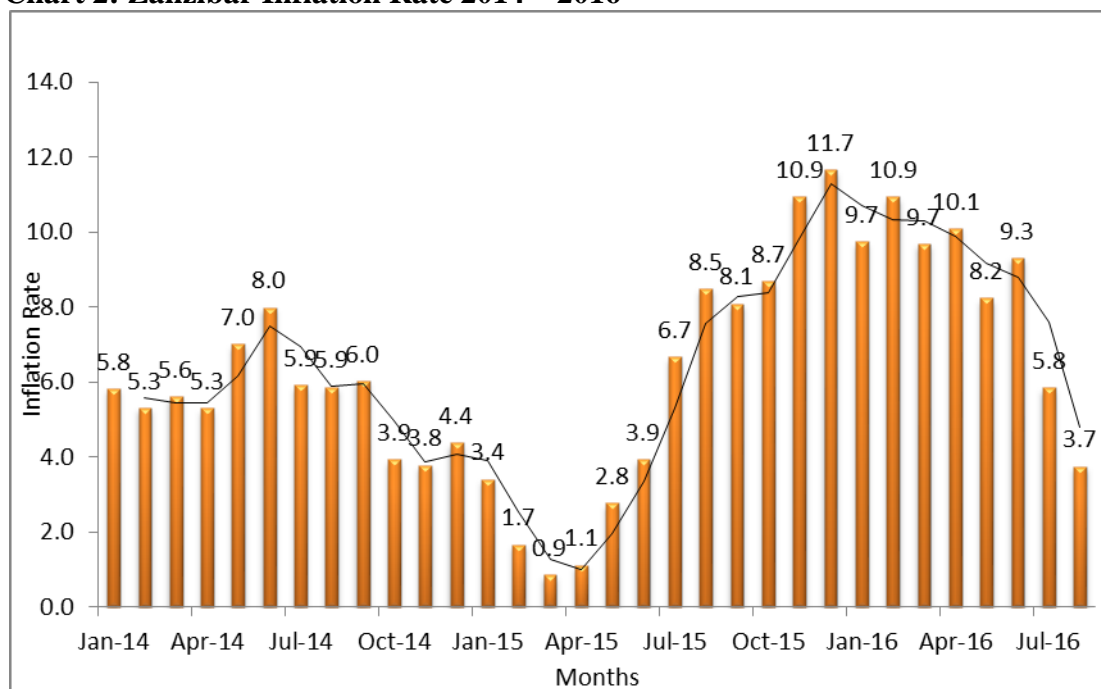
Source: Office of Chief Government Statistician, Zanzibar

Chart 1: Development of Inflation Rate for Selected groups from August, 2015 – August, 2016



Source: Office of Chief Government Statistician, Zanzibar

Chart 2: Zanzibar Inflation Rate 2014 – 2016



Source: Office of Chief Government Statistician, Zanzibar

The CPI measures the average percentage changes over time (between two time periods) in the prices of a “basket” of consumer goods and services acquired by households (the market basket) in Zanzibar. The Zanzibar CPI covers prices of 269 items collected in 316 outlets in Unguja and Pemba urban Centers. The goods and services included in the ZCPI basket are classified according to the UN COICOP (Classification of Individual Consumption According by Purpose) with 12 divisions.

The ZCPI weights are based on both monetary and non-momentary expenditures relating to consumption for households in Zanzibar for the 2009/10 Household Budget Survey (HBS). The weight is based on expenditures of both urban and rural households and was updated in August 2012. Both base price and index has reference period of August (2012=100).

**For more clarifications please contact:
 OFFICE OF CHIEF GOVERNMENT STATISTICIAN
 Director: Head Economic Statistics Section

 CHIEF GOVERNMENT STATISTICIAN**

Appendix 1

		Indices			Monthly % Change			Annually % Change		
		Core Exclude Energy and Fuels	Rice, Wheat Flour and Sugar Index		Core Exclude Energy and Fuels	Rice, Wheat Flour and Sugar Index		Core Exclude Energy and Fuels	Rice, Wheat Flour and Sugar Index	
Share		10.6	78.7	14.6						
2013	Jan	103.7	100.2	103.2						
	Feb	101.3	101.2	103.1	-2.3	1.0	0.0			
	Mar	101.6	101.6	103.3	0.3	0.4	0.2			
	Apr	104.2	103.5	102.2	2.6	2.0	-1.1			
	May	105.7	102.6	100.9	1.4	-0.9	-1.3			
	Jun	102.9	102.5	98.2	-2.7	-0.2	-2.6			
	Jul	103.6	107.0	97.7	0.8	4.4	-0.5			
	Aug	104.9	106.9	97.5	1.2	-0.1	-0.2			
	Sep	106.5	105.3	96.8	1.5	-1.4	-0.8			
	Oct	107.3	106.5	96.8	0.8	1.1	0.0			
	Nov	107.2	107.0	96.4	-0.1	0.4	-0.4			
	Dec	107.0	105.2	96.9	-0.2	-1.7	0.5			
2014	Jan	107.0	109.1	95.8	0.0	3.8	-1.1	3.2	9.0	-7.2
	Feb	106.8	109.3	95.9	-0.1	0.2	0.1	5.5	8.0	-7.1
	Mar	107.1	110.1	96.2	0.3	0.7	0.3	5.5	8.4	-6.9
	Apr	107.1	112.0	96.0	0.0	1.8	-0.2	2.8	8.2	-6.1
	May	108.1	113.1	95.6	0.9	0.9	-0.4	2.2	10.2	-5.2
	Jun	113.5	112.9	95.6	5.0	-0.2	0.0	10.3	10.2	-2.7
	Jul	113.5	114.9	95.6	0.0	1.7	0.0	9.5	7.4	-2.2
	Aug	112.4	114.8	95.6	-0.9	0.0	0.0	7.2	7.4	-2.0
	Sep	111.1	113.6	95.6	-1.2	-1.1	0.0	4.3	7.8	-1.2
	Oct	111.1	111.9	96.3	0.0	-1.4	0.7	3.5	5.1	-0.4
	Nov	111.1	111.7	97.6	0.0	-0.2	1.3	3.6	4.5	1.2
	Dec	111.5	110.9	97.5	0.3	-0.8	0.0	4.2	5.4	0.7
2015	Jan	105.4	114.3	98.0	-5.4	3.1	0.5	-1.4	4.7	2.4
	Feb	104.7	112.3	96.5	-0.7	-1.7	-1.5	-2.0	2.7	0.7
	Mar	96.2	113.3	96.6	-8.1	0.9	0.1	-10.1	2.9	0.5
	Apr	96.4	115.3	97.6	0.2	1.8	1.0	-10.0	3.0	1.7
	May	100.7	117.4	101.4	4.4	1.7	4.0	-6.8	3.8	6.1
	Jun	100.4	118.8	103.3	-0.3	1.2	1.8	-11.5	5.2	8.0
	Jul	106.9	122.9	107.8	6.5	3.5	4.3	-5.8	7.0	12.7
	Aug	106.9	125.0	109.4	0.0	1.7	1.6	-4.9	8.9	14.5
	Sep	102.0	123.8	108.6	-4.6	-1.0	-0.8	-8.2	9.0	13.6
	Oct	102.0	123.0	108.8	0.0	-0.6	0.2	-8.2	9.9	13.0
	Nov	102.0	126.2	110.2	0.0	2.5	1.2	-8.2	12.9	12.9
	Dec	100.7	126.3	110.2	-1.2	0.1	0.0	-9.7	13.9	12.9
2016	Jan	102.0	126.0	111.6	1.2	-0.2	1.3	-3.3	10.3	13.8
	Feb	100.2	125.7	109.9	-1.7	-0.2	-1.5	-4.3	12.0	13.8
	Mar	96.0	124.4	110.1	-4.2	-1.1	0.2	-0.3	9.8	13.9
	Apr	99.4	127.0	109.9	3.6	2.1	-0.2	3.1	10.1	12.6
	May	101.4	127.6	110.3	2.0	0.5	0.4	0.8	8.8	8.8
	June	102.6	130.7	111.7	1.1	2.4	1.2	2.1	10.0	8.1
	July	104.6	131.4	112.6	1.9	0.5	0.8	-2.2	6.9	4.5
	August	106.4	130.3	113.2	1.8	-0.9	0.5	-0.5	4.2	3.4