



STATISTICAL RELEASE

JANUARY - 2016

P.O. Box 2321, Zanzibar
Telephone +255 24 223 1869
Fax: +255 24 223 174 2

Email: zanstat@ocgs.go.tz

Website: <http://www.ocgs.go.tz>

28TH JANUARY, 2016

ZANZIBAR CONSUMER PRICE INDEX (CPI) FOR JANUARY, 2016

ANNUAL HEADLINE INFLATION RATE DROPPED TO 9.7 PERCENT

Zanzibar Annual Headline Inflation rate for the year ended January, 2016 dropped to 9.7 percent compared to 11.7 percent recorded in December, 2015 (**Table 1 and chart 2**). Food and Non-Alcoholic Beverages inflation rate decreased to 11.8 percent in January 2016 from 17.6 percent recorded in December 2015. The overall Index increased to 121.3 in January, 2016 compared to 110.5 recorded in January, 2015.

TABLE 1: CHANGES IN CONSUMER PRICE INDICES FOR JANUARY, 2016

(BASE AUG. 2012 = 100)

Description	Weights	INDICES			Dec 2015 to Jan 2016 % Change	Jan 2015 to Jan 2016 % Change
		Jan-15	Dec-15	Jan-16		
Food and Non-Alcoholic Beverages	49.5	106.0	119.1	118.5	-0.5	11.8
Alcohol Beverages, Tobacco and Narcotics	0.3	112.7	115.4	115.4	0.0	2.4
Clothing and Footwear	9.3	117.3	129.3	130.4	0.9	11.2
Housing, Water, Electricity, Gas, and Other Fuels	17.1	112.5	118.0	119.0	0.8	5.8
Furnishing, Household Equipment and Routine Household Maintenance	4.6	110.2	116.4	116.8	0.4	6.1
Health	2.8	105.9	116.7	118.1	1.2	11.5
Transport	6.3	102.0	102.4	102.4	0.0	0.4
Communication	2.6	184.1	200.4	199.9	-0.2	8.6
Recreation and Culture	0.8	125.0	130.3	130.3	0.0	4.3
Education	1.3	136.1	138.1	150.6	9.1	10.7
Restaurants and Hotels	2.1	102.4	133.2	134.5	1.0	31.2
Miscellaneous Goods and Services	3.2	121.6	131.1	131.8	0.5	8.3
All Items	100.0	110.5	121.1	121.3	0.1	9.7

Source: Office of Chief Government Statistician, Zanzibar

Annual Food and Non-Alcoholic Beverages group decreased to 11.8 percent driven by Fish (-5.8%), Oranges (-18.3%), Coconut (-5.3%), Traditional chicken (-5.8%), Large Mango (-35.0%), Okra (-4.7%) and Ginger (-16.5%).

Annual Housing, Water, Electricity, Gas, and Other Fuels group increased to 5.8 percent driven by Water Paint (28.1%), Oil Paint (29.8%), and Cement (5.2%)

Annual Education group increased to 10.7% driven by Pre Primary School Fees (30.5%), Primary School Fees (9.7%) and Secondary School Fees (20.8%)

ANNUAL INFLATION RATE FOR OTHER DERIVED STATISTICS

Annual Inflation Rate for all items exclude food consumed at home and at restaurants (S1) increased to 6.8 percent in January 2016 compared to 5.2 percent recorded in December 2015. Annual inflation rate for food consumed at home and at restaurants (S2) decreased to 12.5 percent in January, 2016 from 18.1 percent recorded in December 2015. Annual inflation rate for Energy and Fuels (S3) (Petrol, Diesel, Kerosene, Charcoal, Electricity, Gas and Firewood) is -3.3 percent in January 2016 compared to -9.7 recorded in December 2015. Annual Core inflation rate (S4) (Exclude Rice, Wheat Flour, Sugar, Petrol, Diesel, kerosene, and Charcoal) decreased to 10.3 percent in January, 2016 from 13.9 percent in December, 2015. Annual inflation rate for Fish (S5) decreased to -14.9 percent in January, 2016 compared to 13.3 percent in December, 2015. Annual Inflation rate for Rice, Wheat Flour, and Sugar (S6) increased to 13.8 percent in January, 2016 compared to 12.9 recorded in December, 2015 (**Table 2**)

TABLE 2: OTHER DERIVED STATISTICS

Description	Weights	INDICES			Dec 2015 to Jan 2016 % Change	Jan 2015 to Jan 2016 % Change
		Jan-15	Dec-15	Jan-16		
All Item Exclude Food (S1)	48.4	115.7	122.6	123.6	0.8	6.8
Food (S2)	51.6	105.8	119.7	119.1	-0.5	12.5
Energy and Fuels (S3)	10.6	105.4	100.7	102.0	1.2	-3.3
Core Exclude Food and Energy (S4)	78.7	114.3	126.3	126.0	-0.2	10.3
Fish Index (S5)	6.5	124.3	107.1	105.8	-1.2	-14.9
Rice, Wheat Flour and Sugar Index (S6)	14.6	98.0	110.2	111.6	1.3	13.8

Source: Office of Chief Government Statistician, Zanzibar

MONTHLY INFLATION RATE INCREASED TO 0.1 PERCENT IN JANUARY, 2016

During January, 2016 the Monthly Inflation rate increased to 0.1 percent compared to -0.1 percent recorded in December, 2015. The monthly Food and Non-Alcoholic Beverages inflation rate in January, 2016 decreased to -0.5 percent compared to 0.1 percent in December, 2015 (**Table 1**)

Monthly Inflation Rate for all items exclude food consumed at home and at restaurants (S1) increased to 0.8 percent in January 2016 compared to -0.2 percent registered in December, 2015. Monthly inflation rate for food consumed at home and at restaurants (S2) decreased to -0.5 percent in January, 2016 compared to 0.1 percent in December, 2015. Monthly inflation rate for energy and fuels (S3) (Petrol, Diesel, kerosene, electricity, gas, Charcoal and Firewood) increase to 1.2 percent in January 2016 compared to -1.2 registered in December, 2015. Monthly Core inflation rate (S4) (Exclude Rice, Wheat Flour, Sugar, Petrol, Diesel, kerosene, and Charcoal) is -0.2 percent in January, 2016 compared to 0.1 percent in December 2015. Monthly inflation rate for fish (S5) was -1.2 percent in January, 2016 compared to -11.3 percent in December, 2015. Monthly Inflation rate for Rice, Wheat Flour and Sugar (S6) increased to 1.3 percent in January, 2016 compared to 0.0 percent in December, 2015. (**Table 2**)

MOVEMENT OF AVERAGE PRICES FOR SELECTED ITEMS

The increasing of Monthly inflation rate to 0.1 percent for the month of January, 2016 was contributed by increasing prices of items such as Mbeya Rice (2.9%), Maize Flour (6.9%), Wheat Flour (1.2%), Fish (4.6%), Octopus (10.5%), Squid (11.2%), Yellow Cooking Banana (2.1%),

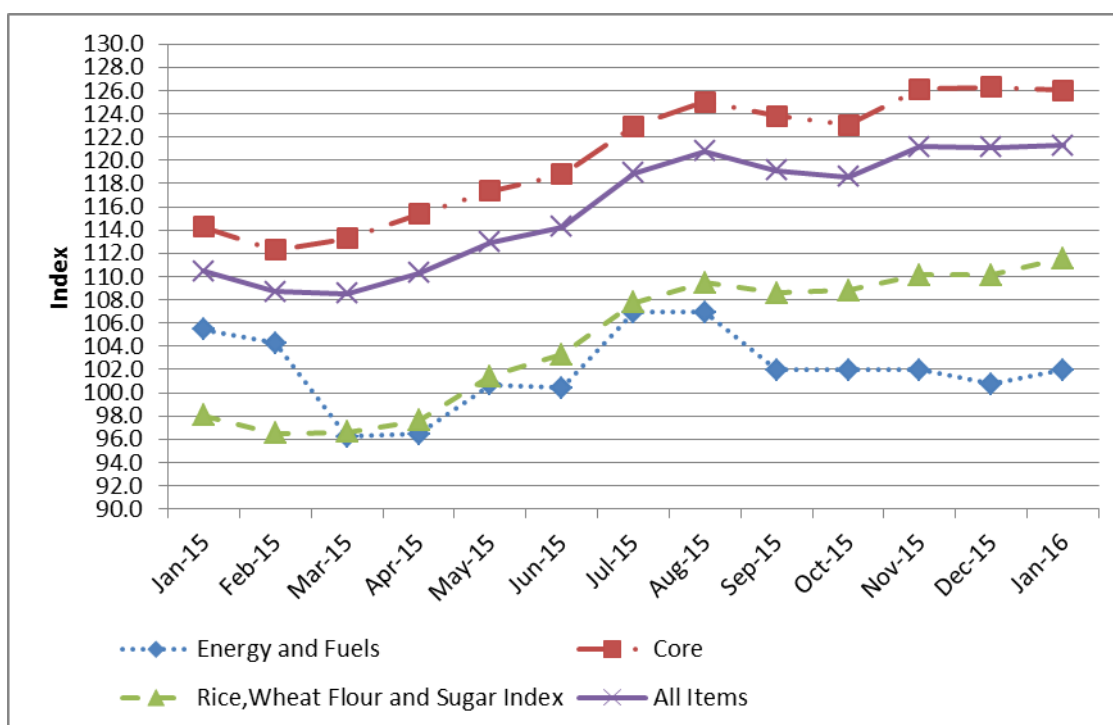
Cassava (14.4%), Sweet Potatoes (8.3%) Sugar (4.7%), Material for Men’s Trousers (2.3%), Khangas (3.1%), Dental Services (5.9%), Pre Primary School Fees (30.5%), Primary School Fees (9.7%) and Secondary School Fees (11.8%) (Table 3)

Table 3: Monthly Average Prices for Selected Items 2015 - 2016

Items	Unit	Jan-15	Dec-15	Jan-16	% Monthly	% Annually
Thailand rice (Mapembe)	1 kg	1,149	1,299	1,297	-0.1	12.9
Mbeya	1 kg	1,897	2,282	2,349	2.9	23.8
Jasmi	1 kg	1,758	1,864	1,864	0.0	6.1
Basmat	1 kg	3,143	3,143	3,143	0.0	0.0
Flatbread (Boflo)	0.5kg	911	1,012	956	-5.5	4.9
Maize Flour	1kg	1,063	1,183	1,265	6.9	19.0
Wheat Flour	1kg	1,129	1,299	1,315	1.2	16.4
Fish	1kg	8,607	7,755	8,112	4.6	-5.8
Edible cooking Oils (OKI)	2 litre	6,867	7,354	7,354	0.0	7.1
Green Cooking Bananas	1kg	746	1,119	1,078	-3.7	44.4
Yellow Cooking Bananas	1kg	1,787	2,213	2,260	2.1	26.5
Sugar	1kg	1,379	1,448	1,516	4.7	9.9
Cement	50 kg	14,404	15,202	15,151	-0.3	5.2
Kerosene	1 litre	1,410	1,230	1,230	0.0	-12.8
Charcoal	1Polo	12,161	12,107	13,072	8.0	7.5
Diesel	1 litre	1,960	1,890	1,890	0.0	-3.6
Petrol	1 litre	1,920	1,850	1,850	0.0	-3.6

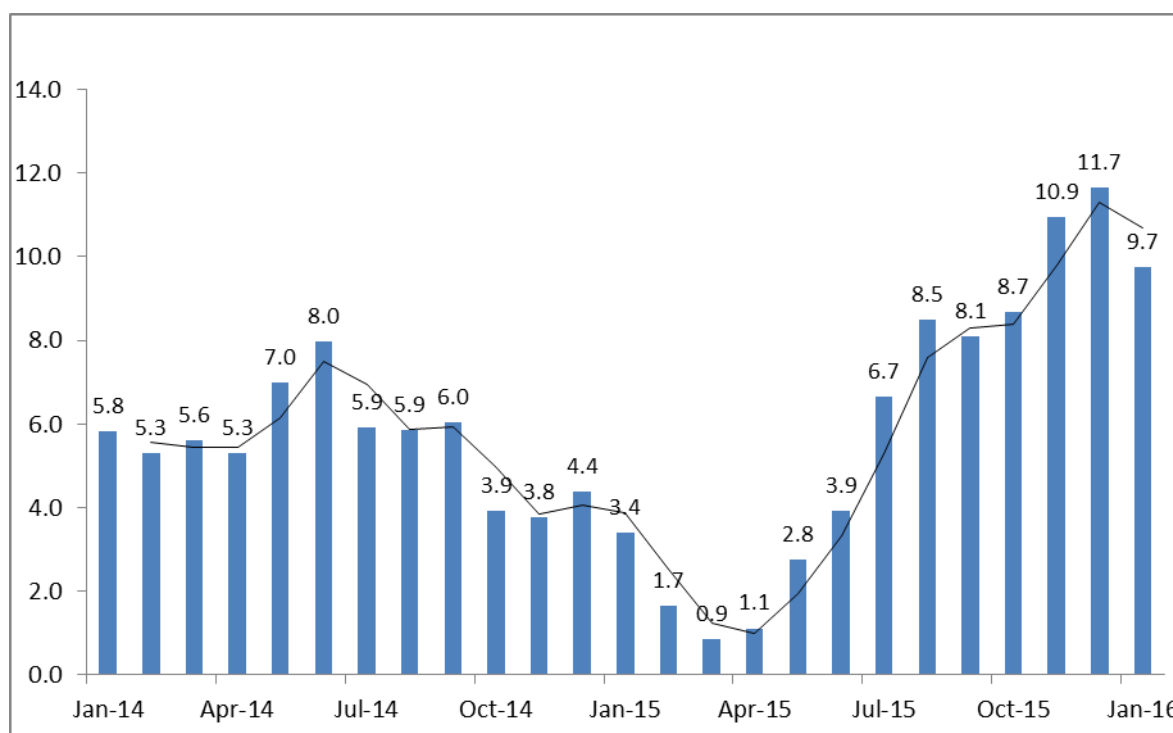
Source: Office of Chief Government Statistician, Zanzibar

Chart 1: Development of Inflation Rate for Selected groups from January, 2015 – January, 2016



Source: Office of Chief Government Statistician, Zanzibar

Chart 2: Zanzibar Inflation Rate 2014 – 2016



Source: Office of Chief Government Statistician, Zanzibar

The CPI measures the average percentage changes over time (between two time periods) in the prices of a “basket” of consumer goods and services acquired by households (the market basket) in Zanzibar. The Zanzibar CPI covers prices of 269 items collected in 316 outlets in Unguja and Pemba urban Centers. The goods and services included in the ZCPI basket are classified according to the UN COICOP (Classification of Individual Consumption According by Purpose) with 12 divisions.

The ZCPI weights are based on both monetary and non-momentary expenditures relating to consumption for households in Zanzibar for the 2009/10 Household Budget Survey (HBS). The weight is based on expenditures of both urban and rural households and was updated in August 2012. Both base price and index has reference period of August (2012=100).

**For more clarifications please contact:
OFFICE OF CHIEF GOVERNMENT STATISTICIAN
Director: Head Economic Statistics Section**

CHIEF GOVERNMENT STATISTICIAN

Appendix 1

		Indices			Monthly % Change			Annually % Change		
		Energy and Fuels	Core Exclude Food and Energy	Rice, Wheat Flour and Sugar Index	Energy and Fuels	Core Exclude Food and Energy	Rice, Wheat Flour and Sugar Index	Energy and Fuels	Core Exclude Food and Energy	Rice, Wheat Flour and Sugar Index
Share		10.6	78.7	14.6						
2013	Jan	103.7	100.2	103.2						
	Feb	101.3	101.2	103.1	-2.3	1.0	0.0			
	Mar	101.6	101.6	103.3	0.3	0.4	0.2			
	Apr	104.2	103.5	102.2	2.6	2.0	-1.1			
	May	105.7	102.6	100.9	1.4	-0.9	-1.3			
	Jun	102.9	102.5	98.2	-2.7	-0.2	-2.6			
	Jul	103.6	107.0	97.7	0.8	4.4	-0.5			
	Aug	104.9	106.9	97.5	1.2	-0.1	-0.2			
	Sep	106.5	105.3	96.8	1.5	-1.4	-0.8			
	Oct	107.3	106.5	96.8	0.8	1.1	0.0			
	Nov	107.2	107.0	96.4	-0.1	0.4	-0.4			
	Dec	107.0	105.2	96.9	-0.2	-1.7	0.5			
2014	Jan	107.0	109.1	95.8	0.0	3.8	-1.1	3.2	9.0	-7.2
	Feb	106.8	109.3	95.9	-0.1	0.2	0.1	5.5	8.0	-7.1
	Mar	107.1	110.1	96.2	0.3	0.7	0.3	5.5	8.4	-6.9
	Apr	107.1	112.0	96.0	0.0	1.8	-0.2	2.8	8.2	-6.1
	May	108.1	113.1	95.6	0.9	0.9	-0.4	2.2	10.2	-5.2
	Jun	113.5	112.9	95.6	5.0	-0.2	0.0	10.3	10.2	-2.7
	Jul	113.5	114.9	95.6	0.0	1.7	0.0	9.5	7.4	-2.2
	Aug	112.4	114.8	95.6	-0.9	0.0	0.0	7.2	7.4	-2.0
	Sep	111.1	113.6	95.6	-1.2	-1.1	0.0	4.3	7.8	-1.2
	Oct	111.1	111.9	96.3	0.0	-1.4	0.7	3.5	5.1	-0.4
	Nov	111.1	111.7	97.6	0.0	-0.2	1.3	3.6	4.5	1.2
	Dec	111.5	110.9	97.5	0.3	-0.8	0.0	4.2	5.4	0.7
2015	Jan	105.4	114.3	98.0	-5.4	3.1	0.5	-1.4	4.7	2.4
	Feb	104.7	112.3	96.5	-0.7	-1.7	-1.5	-2.0	2.7	0.7
	Mar	96.2	113.3	96.6	-8.1	0.9	0.1	-10.1	2.9	0.5
	Apr	96.4	115.3	97.6	0.2	1.8	1.0	-10.0	3.0	1.7
	May	100.7	117.4	101.4	4.4	1.7	4.0	-6.8	3.8	6.1
	Jun	100.4	118.8	103.3	-0.3	1.2	1.8	-11.5	5.2	8.0
	Jul	106.9	122.9	107.8	6.5	3.5	4.3	-5.8	7.0	12.7
	Aug	106.9	125.0	109.4	0.0	1.7	1.6	-4.9	8.9	14.5
	Sep	102.0	123.8	108.6	-4.6	-1.0	-0.8	-8.2	9.0	13.6
	Oct	102.0	123.0	108.8	0.0	-0.6	0.2	-8.2	9.9	13.0
	Nov	102.0	126.2	110.2	0.0	2.5	1.2	-8.2	12.9	12.9
	Dec	100.7	126.3	110.2	-1.2	0.1	0.0	-9.7	13.9	12.9
2016	Jan	102.0	126.0	111.6	1.2	-0.2	1.3	-3.3	10.2	13.8